



How to Print Labels for Windows

Getting Started

– Important Note –

- A Google Chrome browser is **required** to print labels with Rose. Not supported on Microsoft Edge or Apple Safari browsers.

First – do not plug your Dymo labelwriter into your computer yet. If your Dymo USB is plugged in, go ahead and unplug it now.

Download and Install the driver for the Dymo 450, 550, or 450 Twin Turbo.

1. Download the drivers for the Dymo 450/550/Twin Turbo from [dymo.com](https://www.dymo.com). Go to **Support > Downloads: Software, Drivers & User Guides** > Click on the Windows download. Or, click [here](#) to download directly.
2. Go to your downloads folder, or click on the downloads icon at the top right of your Chrome browser.
3. Open it and run the **Install Wizard**.
4. Follow the Dymo install prompts and click **Next**.
5. **Once finished, plug the printer into your computer.** Doing so before the driver install may require you to remove the printer from your Windows Printers and Scanners settings screen and then plug it back in.

Add the Labelwriter to your Windows computer

6. Navigate to/find the **Printers and Scanners** settings screen. Go to your **Windows Search** and type in “**Printers and Scanners.**” (The current Windows 11 search screen is a centrally located, rounded floating pane that appears above the taskbar when clicking the search box/icon or pressing Win+S)



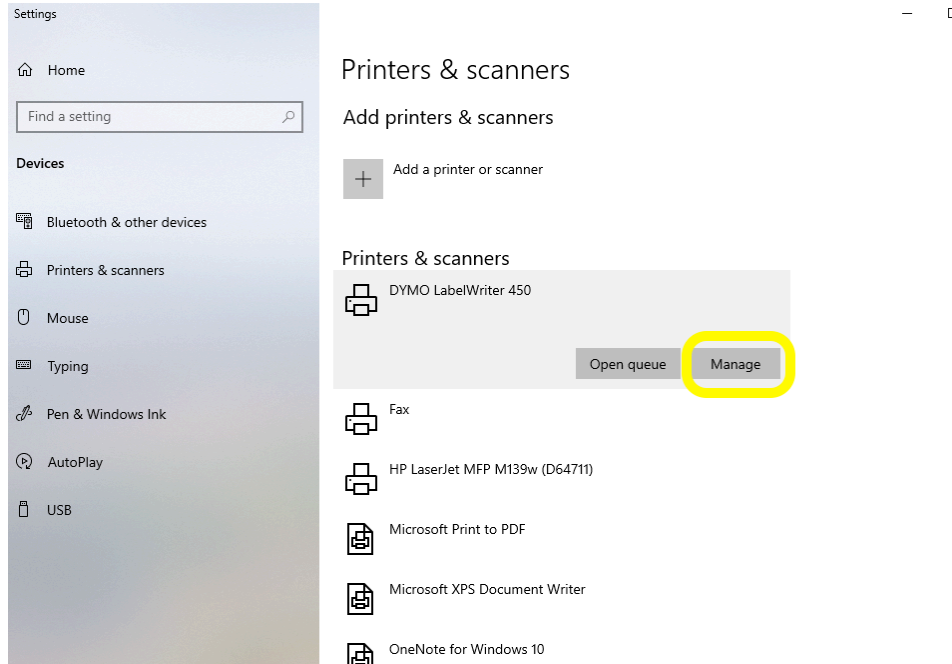
The Windows taskbar consists of various components, each serving a unique purpose:

- | | | | | | |
|---------|----------|-----------|---------|-----------------|-----------|
| 1. | 2. Start | 3. Search | 4. Task | 5. Applications | 6. System |
| Widgets | | | view | | tray |

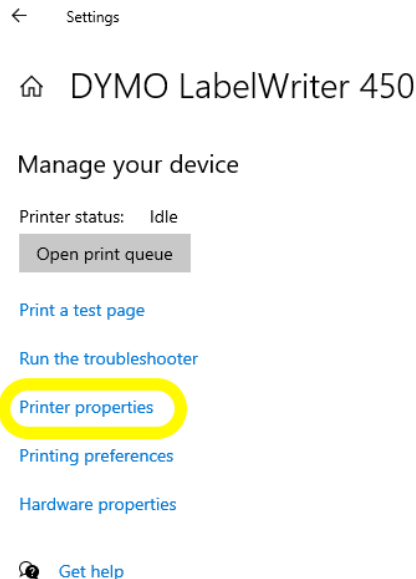


7. Click on **Dymo Labelwriter 450**, then **Manage**. If not showing, then click “Add a printer or scanner” and Windows will search via USB/Bluetooth or give other options to locate. **If you are not seeing the printer listed after Windows search, try restarting your computer.**

8.



9. Click on **Printer Properties**.





Best Practice Tip: Name your Labelwriter. Follow instructions below if you use multiple printers.

10. **Rename** your Printer (ex. Location) and click **OK**.

11. **Go Back** to the main **Printers and Scanners** screen to refresh the name. Windows will not allow you to change advanced printer preferences till you do.

← Settings

🏠 DYMO LabelWriter 450

Manage your device

Printer status: Idle

Open print queue

[Print a test page](#)

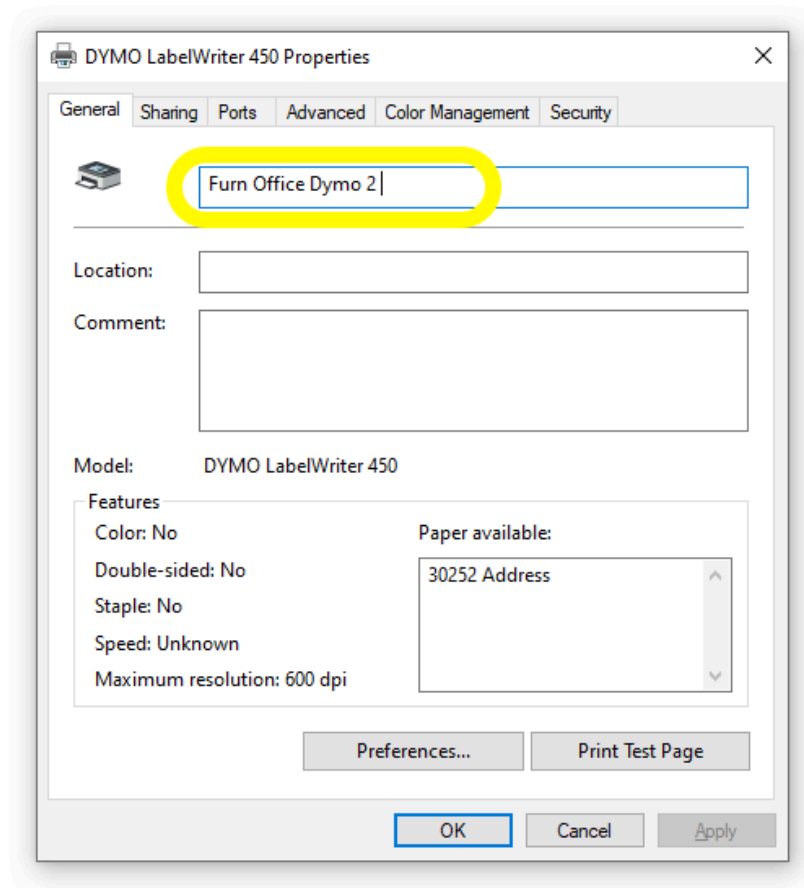
[Run the troubleshooter](#)

[Printer properties](#)

[Printing preferences](#)

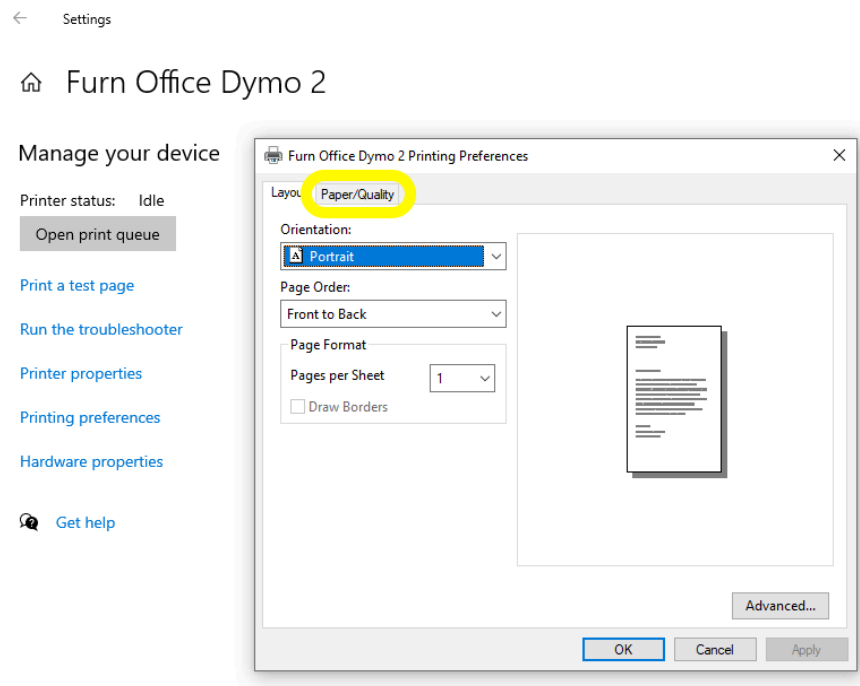
[Hardware properties](#)

[Get help](#)

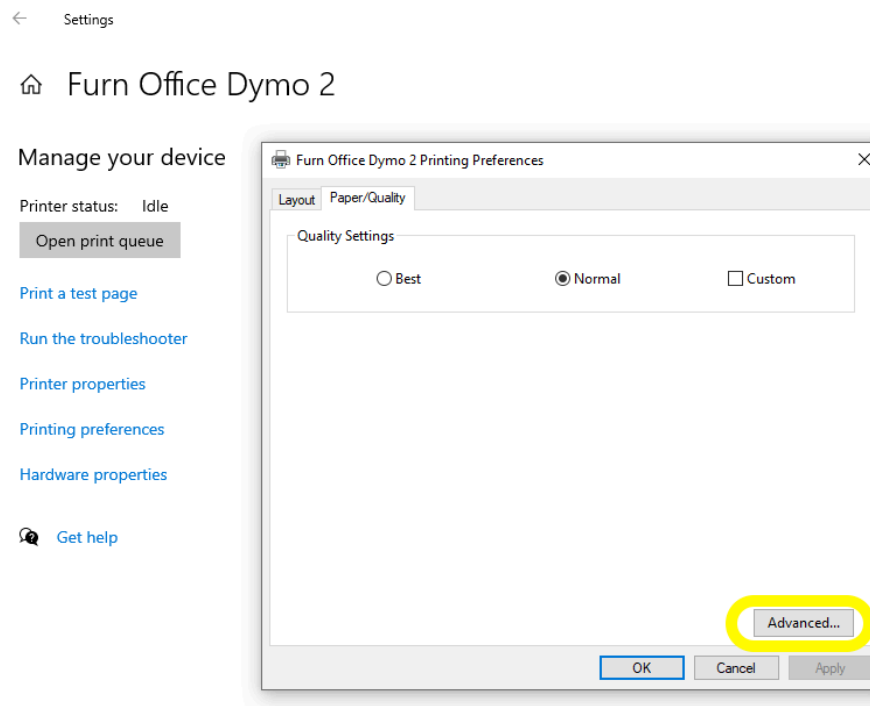




12. Click on **“Your New Name Printer”** and click **Manage**, as you did in Step 9. **Keep** the **Orientation** as **Portrait** and leave those settings as is. Click on the **Paper/Quality** tab.

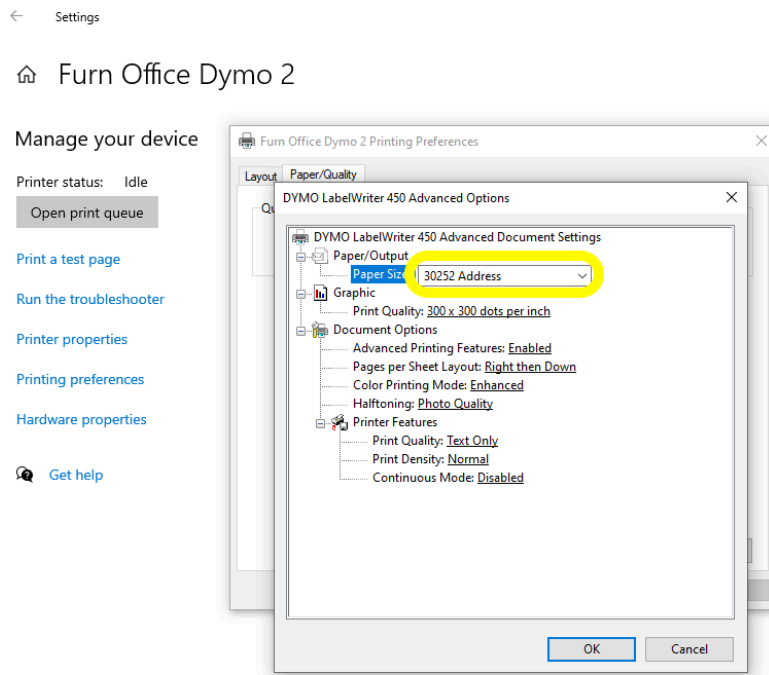


13. Click **Advanced**.

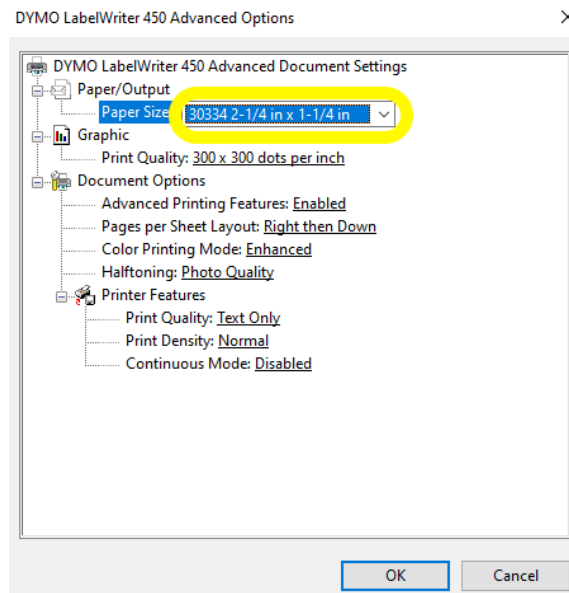




14. Change the paper size from the 30252 Address to **30334 2-1/4 x 1-1/4 in.**



15. **IMPORTANT NOTE:** The **Paper Size** will **ALWAYS** be **30334 2-1/4 x 1-1/4 in.** regardless of what paper size you have in your DYMO (or Zebra, Jaden, or Ozemzify). This is a **default Rose setting** to make it easier by not having to select a different paper size when switching between standard 2-1/4 x 1-1/4 in., 1 x 1 in., or jewelry labels.





- Click **Ok** and you're done!
- If you want to print on a different label than the default label (30334), you will have to alter and save the item in Rose on a small label or jewelry label.

NO DISCOUNTING
 NEVER DELETES
 JEWELRY LABEL
 SMALL LABEL
 AUTOMATIC ITEM FEES
 ONLINE WEBSITE
 TRACK QUANTITY
 COST-BASED PAYOUT

- For Rose Trial and Rose Retail customers, only single-label printing is offered.** Use the Label icon on the left to print your item's label for each one created. You may not select multiple items nor use the "Print Labels for Selected" on Rose Retail or Rose Trial subscriptions.

PAGE 1 DISPLAYING 0 TO 100 OF 45430 INVENTORY, BY NO-SORT

SELECT OPTIONS:

ALTER	LABEL	SKU	DESCRIPTION	BRAND	CATEGORY	SIZE	QUANTITY	PRICE	FEES	SPLIT	SHELFDATE	CONTRACT	LOCATION	LASTATOR	SQUARE.ID	SELECTED
		239312058	LOGO TEE	NIKE	MENS TOP	S	3	\$ 9.99	\$ 1.00	40.00%	04-18-2026	23931 KHOUNLAVONG	CLOTHING STORE	ESSIE	WABJ6NITOXQL6H7PQRZVTMM5	<input type="checkbox"/>
		239311624	BLUE GRAPHIC TEE	POLO RALPH LAUREN	MENS TOP	S	1	\$ 13.99	\$ 1.00	40.00%	04-18-2026	23931 KHOUNLAVONG	CLOTHING STORE	ESSIE	UTQKYTKNABJAQRNOW3RY6V5F	<input type="checkbox"/>
		239314211	TIE DYE GRAPHIC TEE	POLO RALPH LAUREN	MENS TOP	M	1	\$ 13.99	\$ 1.00	40.00%	04-18-2026	23931 KHOUNLAVONG	CLOTHING STORE	ESSIE	GCGMWBLEHXH7V3QJKJUEC6H5G	<input type="checkbox"/>
		239315299	RED BACK GRAPHIC TEE	DRAGONBALL Z	MENS TOP	M	1	\$ 7.19	\$ 0.80	40.00%	04-18-2026	23931 KHOUNLAVONG	CLOTHING STORE	ESSIE	4F5M0SQY5R43H75ISJ4EFB	<input type="checkbox"/>

- The "Print Labels for Selected" function on the Inventory and Take-In is exclusively available to active Rose Pro subscribers who have a Kloudprint login.

Rose supports three Dymo label sizes:

- **30334 - 2-1/8" x 1-1/8" (Default)**
- **30332 - 1"x 1" (Small)**
- **30299 - 2-1/8" x 7/16" (Jewelry)**

For Troubleshooting purposes, please use Chrome for your browser as we can guarantee compatibility with Chrome.

450 Twin Turbo users - to change which roll you want to print from:

- Note: You cannot use Kloudprint (remote print and print all)
- Click on the **printer icon** within Rose's print preview screen.
- Then click on More Settings. Click on **print using sytems dialogue**
- Click on **Preferences**
- At top top of the box click on the tab **Paper/Quality**.
- Click on **Paper Source** and choose either the left or right roll.
- This setting will be remembered. To be efficient, make sure to print all labels needed for that roll and then follow the same steps to change back to the other roll when you are ready to print on the second label roll again.